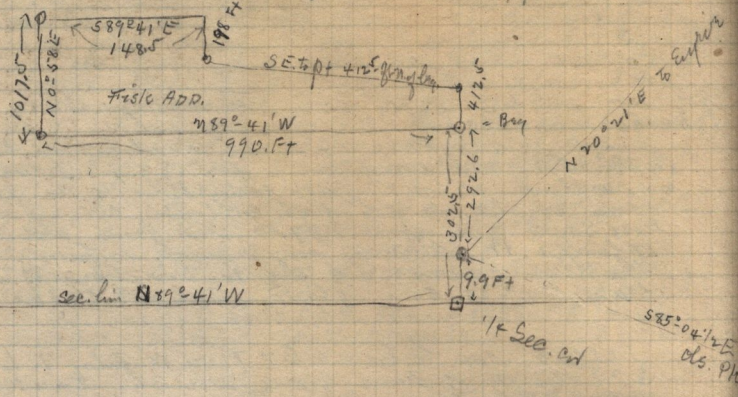


Surveyed June 24-1895. for H. H. Rolapp.



Sylvester Grow

N. 1/2 of S.W. 1/4 and S.E. 1/4 of S.E. 1/4 and N.E. 1/4; and N. 1/2 of S.E. 1/4 Sec. 9, T. 6. N - R. 2. E

Morgan Powell

E. 1/2 and N.E. 1/4 of N.W. 1/4 of Sec. 33, T. 7, N - R. 2. E, and N.W. 1/4 of Sec. 9, 4th of Sec. 3, T. 6, N, R. 2. E

